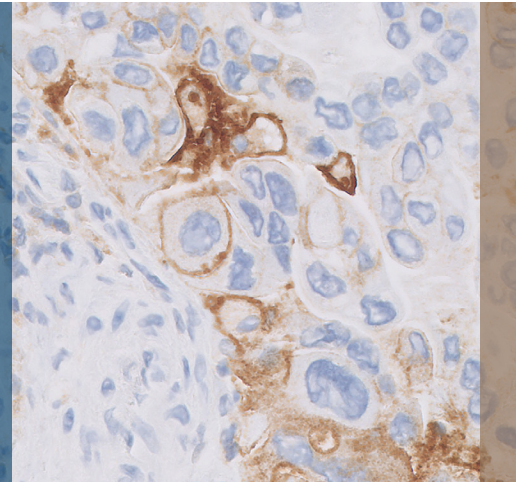


Join Agilent for PD-L1 CPS Training

Florida Society of Pathologists
2024 Annual Pathology Conference

Saturday, February 17



**Don't miss this opportunity while at
the Florida Society of Pathologists
2024 Annual Pathology Conference**

**Saturday, February 17 | 3:30 pm
Disney's Grand Floridian Resort
Orlando, Florida**

Increase your confidence in PD-L1 CPS scoring. PD-L1 status directly impacts a patient's potential treatment. This course will teach best practices and refine your personal CPS scoring technique. Dr. Badve will review various cases that examine the components that determine the PD-L1 expression levels of the specimen, i.e., tumor cells, lymphocytes and macrophages.



Speaker: Dr. Sunil Badve

FRCPath Vice Chair,
Pathology Cancer Program at Emory
University School of Medicine, US

Dr. Sunil Badve is the Vice Chair, and Director of the Pathology Cancer Program at Emory University. He is a surgical pathologist and a translational researcher in breast cancer for over 20 years. Dr. Badve's research in Breast Cancer and Thymic Cancer has resulted in over 300 manuscripts in journals including NEJM, JCO, JNCI, Lancet Oncol and JAMA Oncol in addition to Pathology Journals. He is the Deputy Editor for NPJ Breast Cancer, Associate Editor for JNCI, and Clinical Breast Cancer.